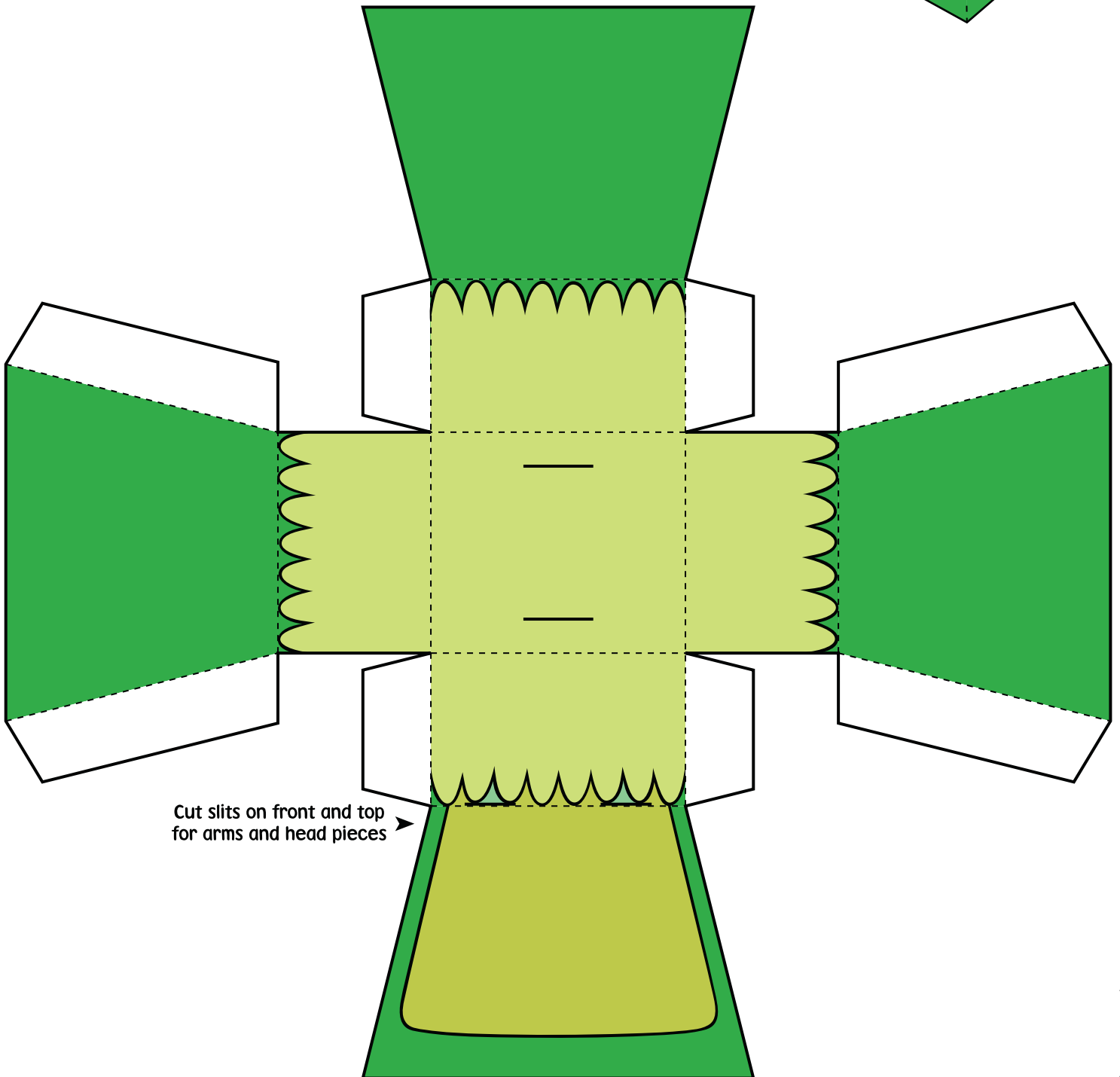
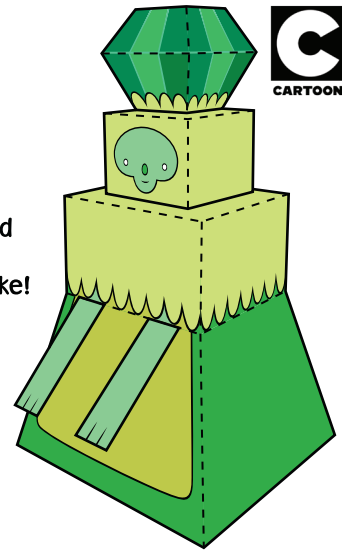




Print template on sturdy paper.
Cut carefully along solid black outline.
Score and fold on dotted lines.
Tape or glue folded tabs to the insides.

This is what your assembled
EMERALD PRINCESS
Paper Foldable should look like!

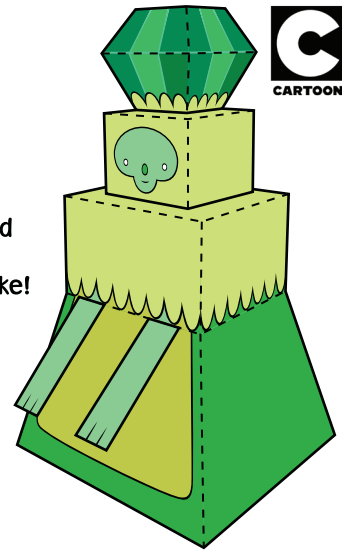


Cut slits on front and top
for arms and head pieces

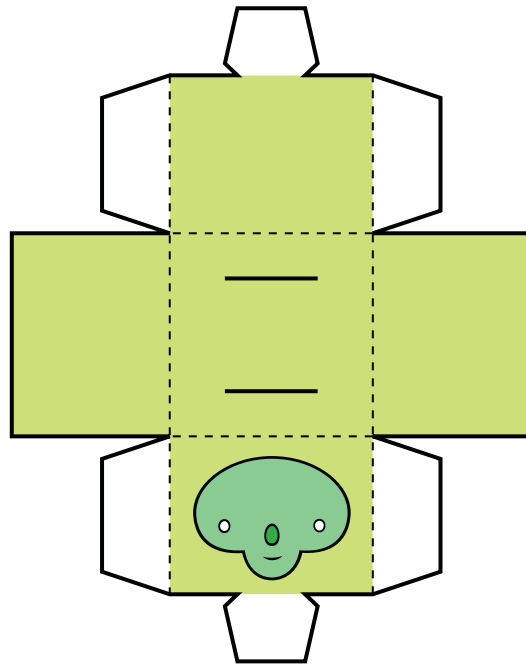


Print template on sturdy paper.
Cut carefully along solid black outline.
Score and fold on dotted lines.
Tape or glue folded tabs to the insides.

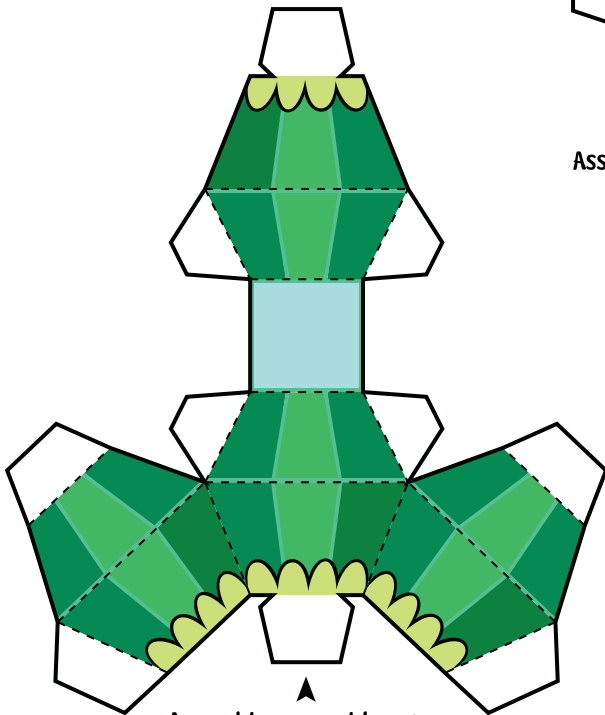
This is what your assembled
EMERALD PRINCESS
Paper Foldable should look like!



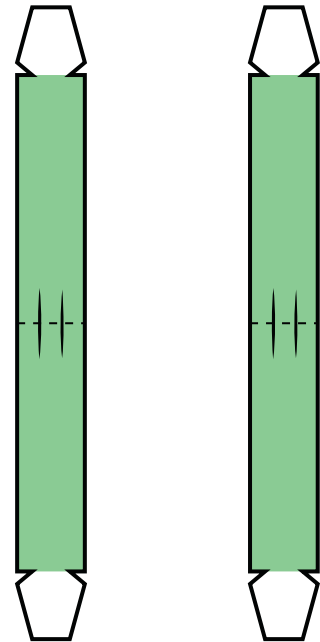
Cut slits on top of head ▶



Assemble head and insert tabs
into slits on top of body



Assemble emerald crown
and insert tabs into slits on head



Tape arm sides together
and insert tabs into slits on front