

REGULAR SHOW™

Instructions:

Print template on sturdy paper.

Cut-out along solid black outlines.

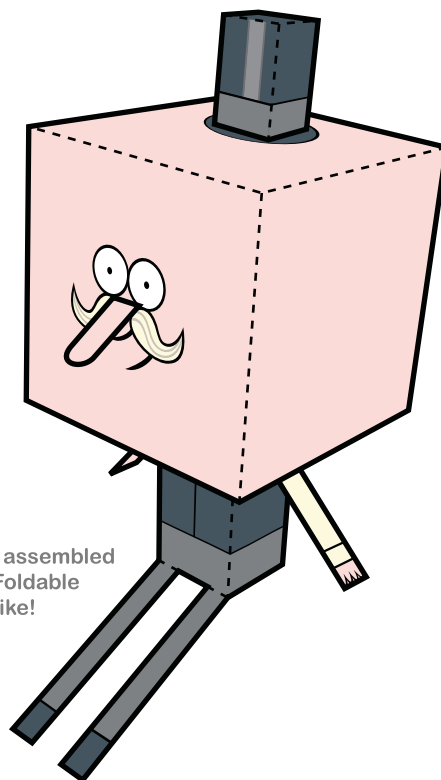
Fold along dotted lines.

Tape or glue folded tabs to insides.

(Double-sided tape or glue stick recommended)

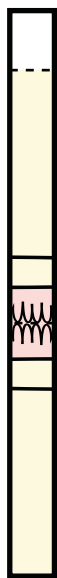
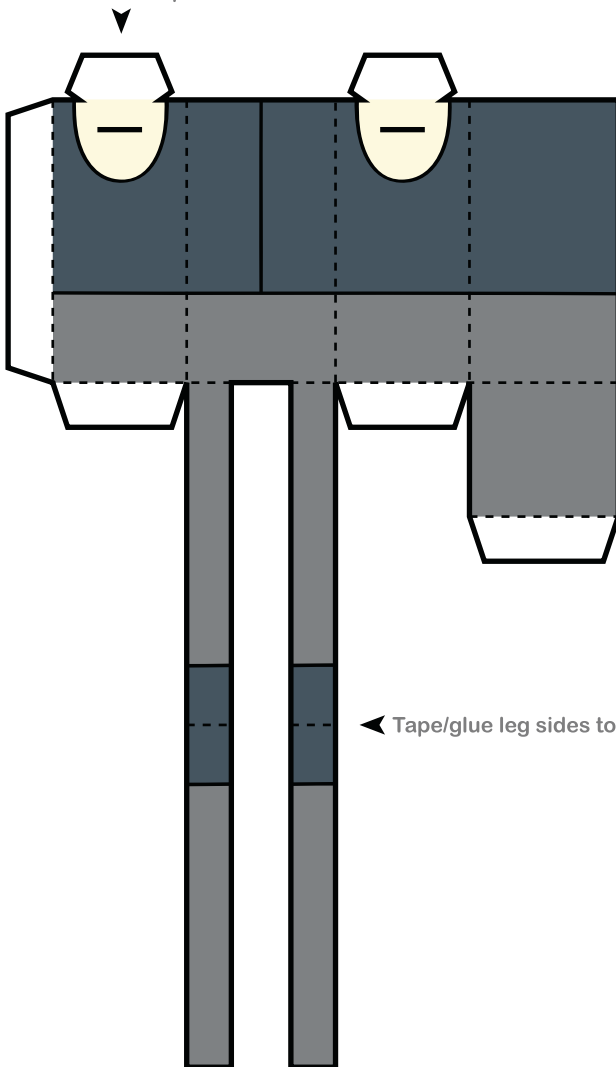
Assemble body section from this page
and connect to head section

POPS



This is what your assembled
POPS Paper Foldable
will look like!

Cut slits for arm pieces



Tape/glue arm sides together



Tape/glue leg sides together

REGULAR SHOW™

Assemble head section from this page
and connect to body section

Cut slits for hat section

