

REGULAR SHOW™

Instructions:

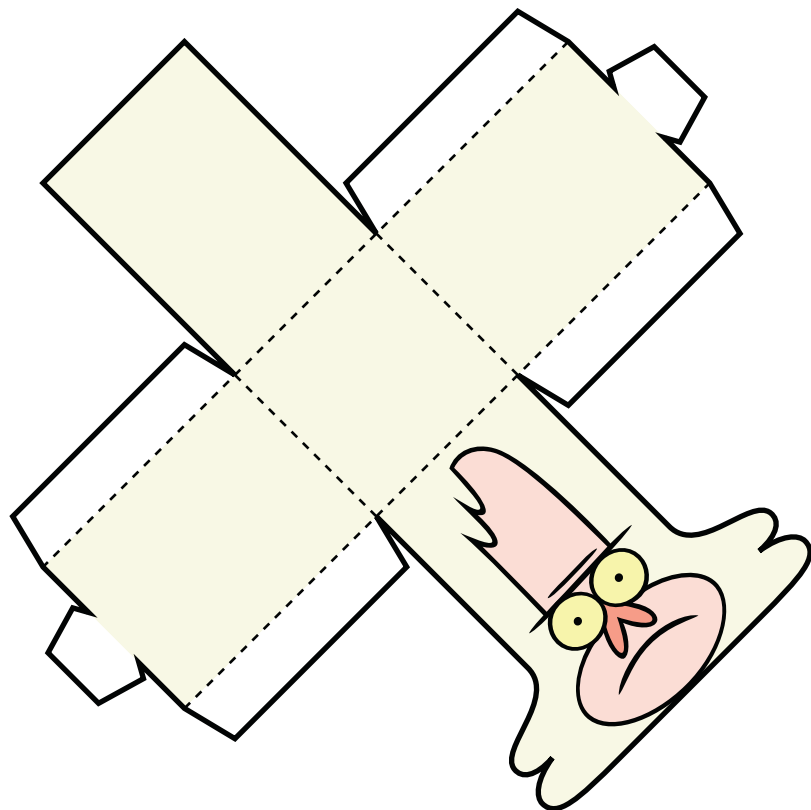
Print template on sturdy paper.

Cut-out along solid black outlines.

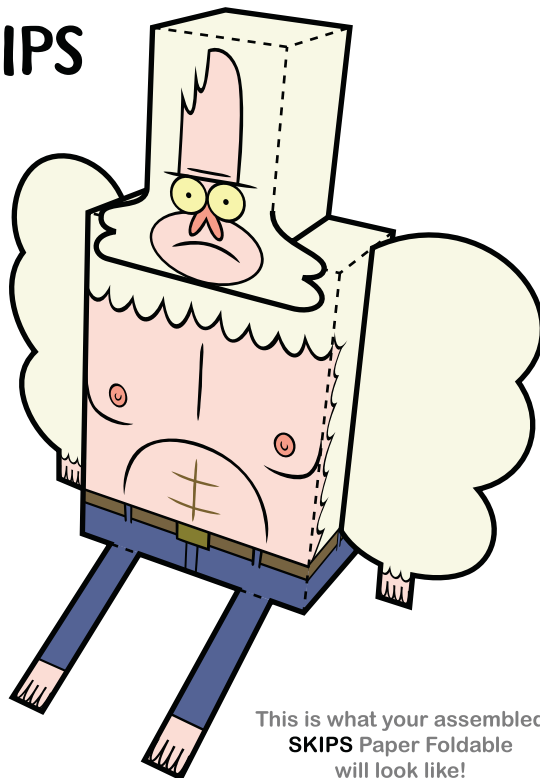
Fold along dotted lines.

Tape or glue folded tabs to insides.

(Double-sided tape or glue stick recommended)

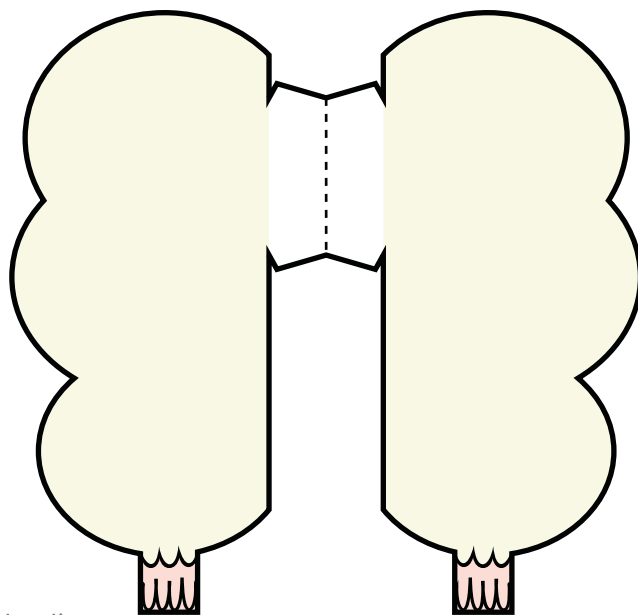
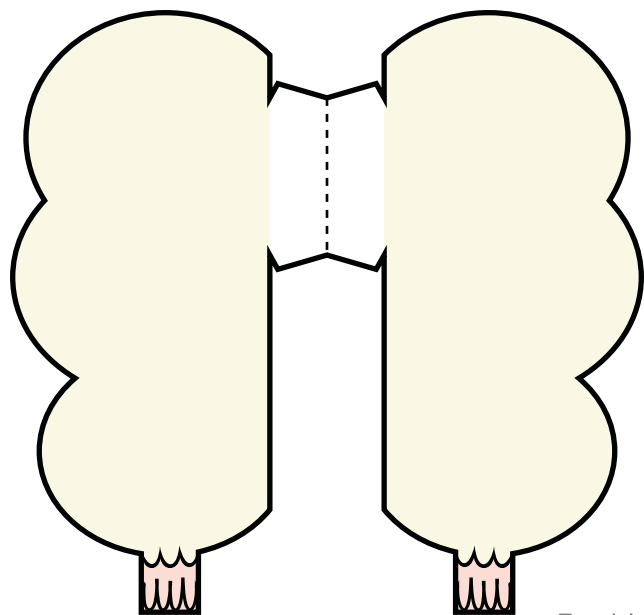


SKIPS



This is what your assembled
SKIPS Paper Foldable
will look like!

Assemble head and arm sections from this page
and connect to body section



Tape/glue arm sides together

REGULAR SHOW™

Assemble body section from this page
and connect to head and arm sections

